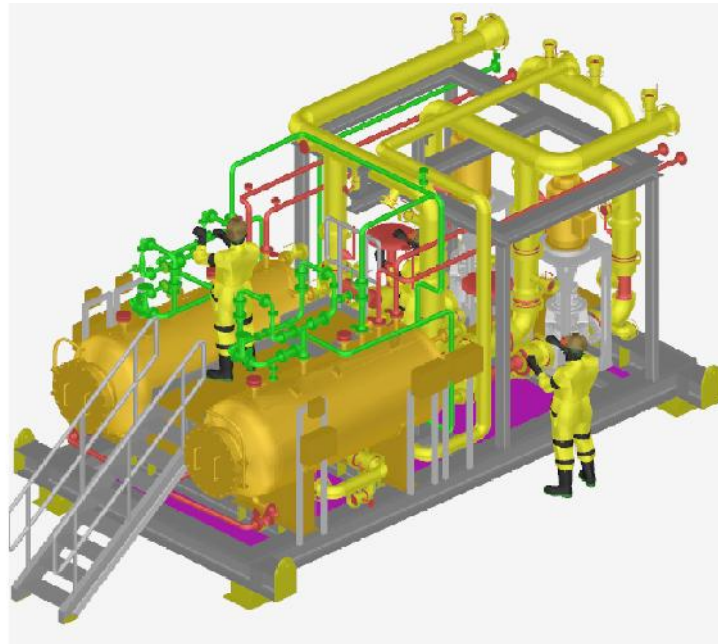


SUPER DUPLEX PIPE AND SKID FABRICATION

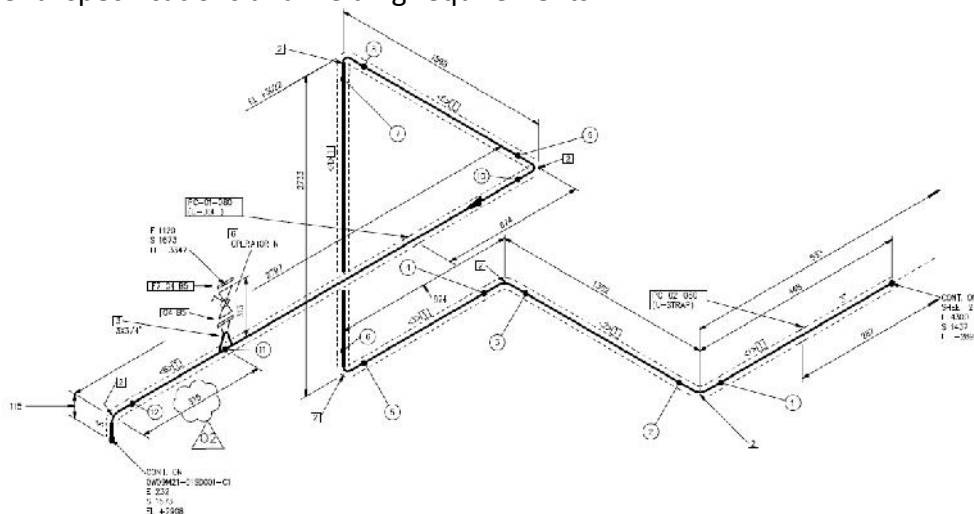
STEP 1 - Situation

Client requested to fabricate super duplex spools in our workshop in Lisbon and to send it to Norway for skid installation. The same team travelled to Norway to fabricate the skid structure and to install all the equipment and pipe spools.



STEP 2 - Challenge

During pipe spools fabrication STEP had a very short timeframe to fabricate the spools and to fulfill the schedule. A proper work plan was essential to define and split tasks on the assigned team. Work to be followed by a third party tight and high level quality control to trace and assess our Client strict material specifications and welding requirements.



STEP 3 - Action

Our engineering department with in-house CAD design capacity was able to supply all needed information to the procurement team and also to the production team. It was necessary to apply pressure on the procurement team to guarantee that all the necessary certified materials would be delivered on time. The assigned coded welders followed the qualified welding procedures approved for this specific job.



The pipe spools and equipment installation in the skid were executed under a strict dimensional control and on schedule.

Our work squad was capable to execute the installation work abroad, due to the international experience that allows the team to adapt in a very natural way to different work conditions worldwide.



STEP 4 – Result

From detailed fabrication drawings, to material supply, pipe-fitting and welding, the pipe fabrication has been executed at the higher quality level in a short time frame. 26 pipe spools with a total of 720 meters of pipe were fabricated in 25 days without repairs. The skid installation was executed in 30 days.

The success of this job relies on STEP, commitment to have an on-going improvement in the quality and delivery of all fabricated products and services, at a competitive price, and to maintain STEP's position as a supplier of choice.