



## Case Study

### Incinerator repair

Refractory replacement

**Site**  
**Activity area**  
**Year**

Setúbal - Portugal  
Incinerator repair  
2023

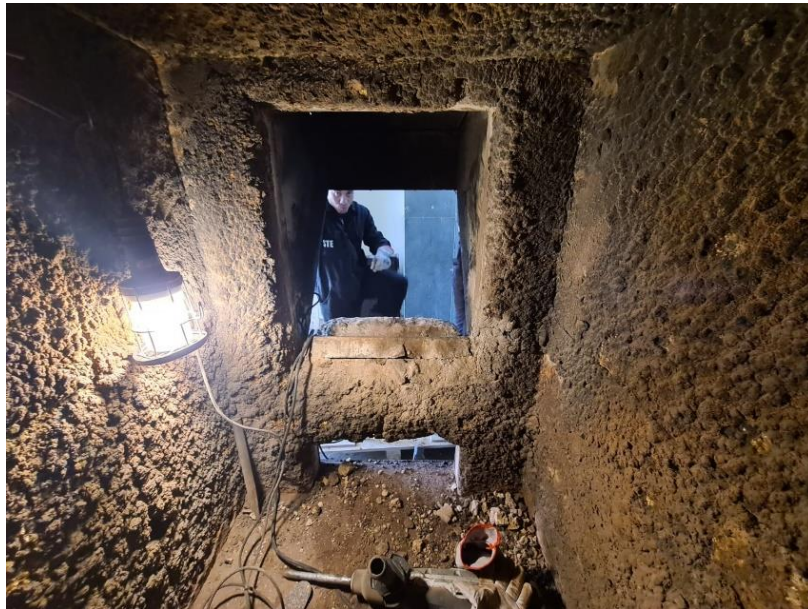
**Situation**

Incinerator refractory repair, on board a vessel berthed at Lisnave Shipyard – Setubal.  
Incinerator type ATLAS.

## Challenge

The Incinerator had several damages on both combustion chambers refractory walls and burner dumper, which needed to be completely rebuilt.

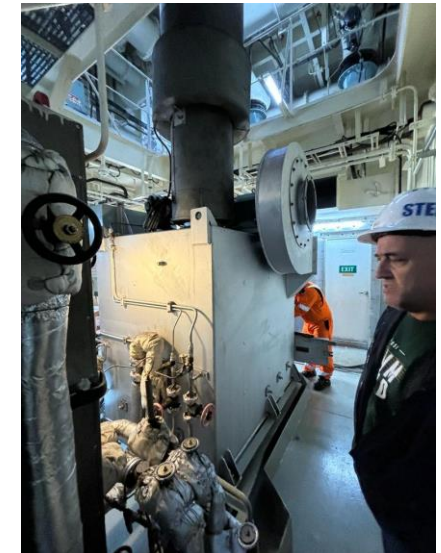
The equipment was opened and dismantled. The old refractory was broken and removed.



*Incinerator inside view (Primary Chamber and Doors)*



*Waste Sluice Feeding Door before rebuilding*



*Initial inspection of the Incinerator*



## Action

- 1 Removal of debris. The critical corrosion points and damages areas were repaired, with new steel inserts and welding.
- 2 The internal steel anchors were renewed (necessary to support the new refractory castable).
- 3 The Big and Small Partition Walls were rebuilt, according to the original configuration.
- 4 On furnace walls and floor, as per the Maker's Instructions, it was applied aprox. 450 kg of new refractory castable (type Calde Patch PB 82 U, AbCrete A60 Cast and Calde Plast Superal X AB).
- 5 The walls were kept drying for about 12 hours with the burner shutters opened to allow circulation of air.
- 6 A final inspection and test run were performed with good results. No defects or cracks were found.



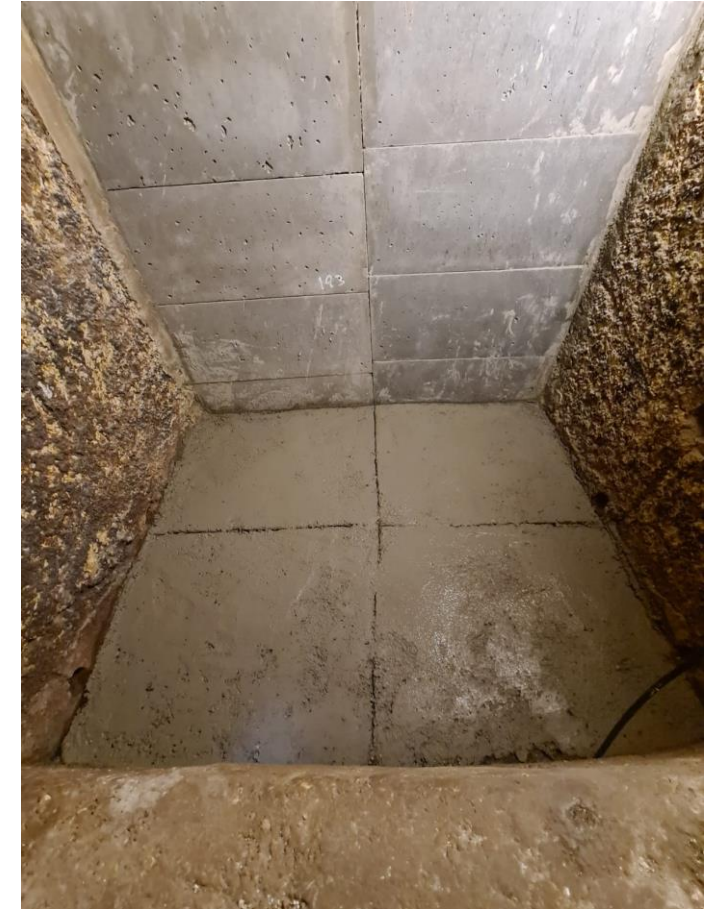




*Work in progress. Repair of the walls*



*New refractory castable application*



*Rebuilding walls and floor*





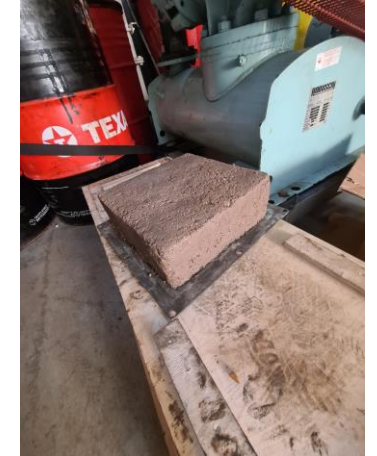
*View of the new Big Partition Wall*



*Ash Door already renewed*



*New Secondary Chamber wall*



*Rebuilt Secondary Door*

## Results

The job was successfully concluded with an acceptable result.  
Another successful completion.

*“...please find signed Service Report attached. We appreciate your great job onboard our good vessel.”*

*Junior Vessel Manager  
Fleet Management BRA*